

EMAS

El sistema europeo de gestión y auditoría medioambientales

Datos de EMAS en Europa

M. A. Barrecheguren. DG ENV. G2. Comisión Europea

Lerida, 24 Octubre 2007

comportamiento, credibilidad, transparencia



Performance, Crédibilité, Transparence



Commission Européenne

TENDENCIAS DE EMAS EN 2007

- Mas de 5600 emplazamientos & 3700 organizaciones
- 60% PYMEs
- Crecimiento en 2007:

Italia	+ 45 %	España	+ 26 %
Portugal	+ 26 %	Grecia	+ 89 %
- Primeras 7 organizaciones & 7 verificadores en Polonia
- Primeras 3 organizaciones & 5 emplazamientos en Letonia
- Primera organización in Rumanía
- Sectores: industria, servicios & Administraciones públicas
- Sectores principales: alimentación y químico
- En crecimiento: turismo, Autoridades Locales & Educacin



EVOLUCION DEL REGISTRO EMAS

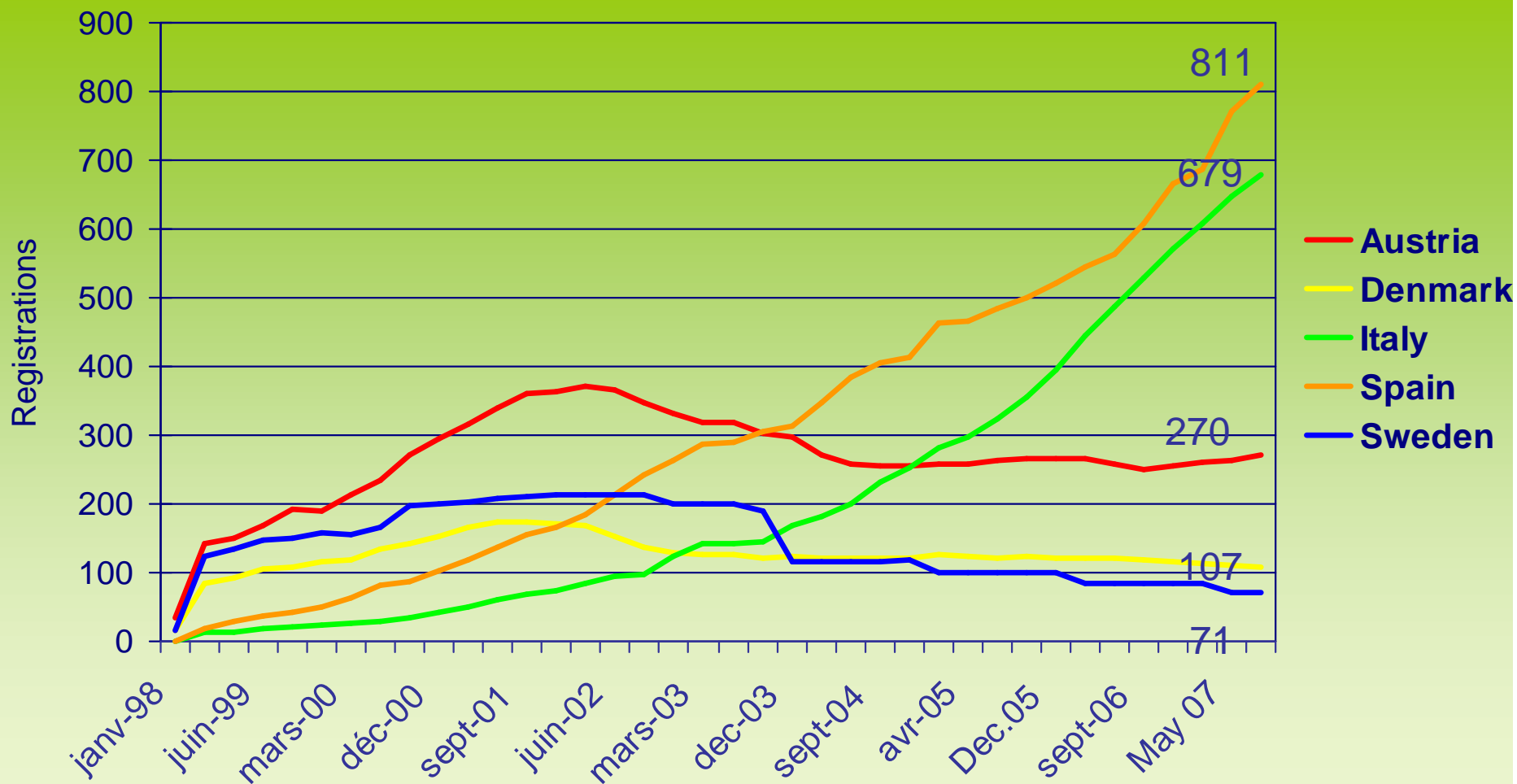
Octubre/2007



1. To facilitate comparisons, the previously reported figures are kept on the graph.
2. The Commission started to collect the number of sites in addition to number of organisations in March 2004 to provide a more accurate picture of EMAS development.
3. Germany reported a significant number of corrections in March 2004.
4. Germany and Spain reported corrections in June 2005.
5. The UK corrected their number of sites in December 2005.

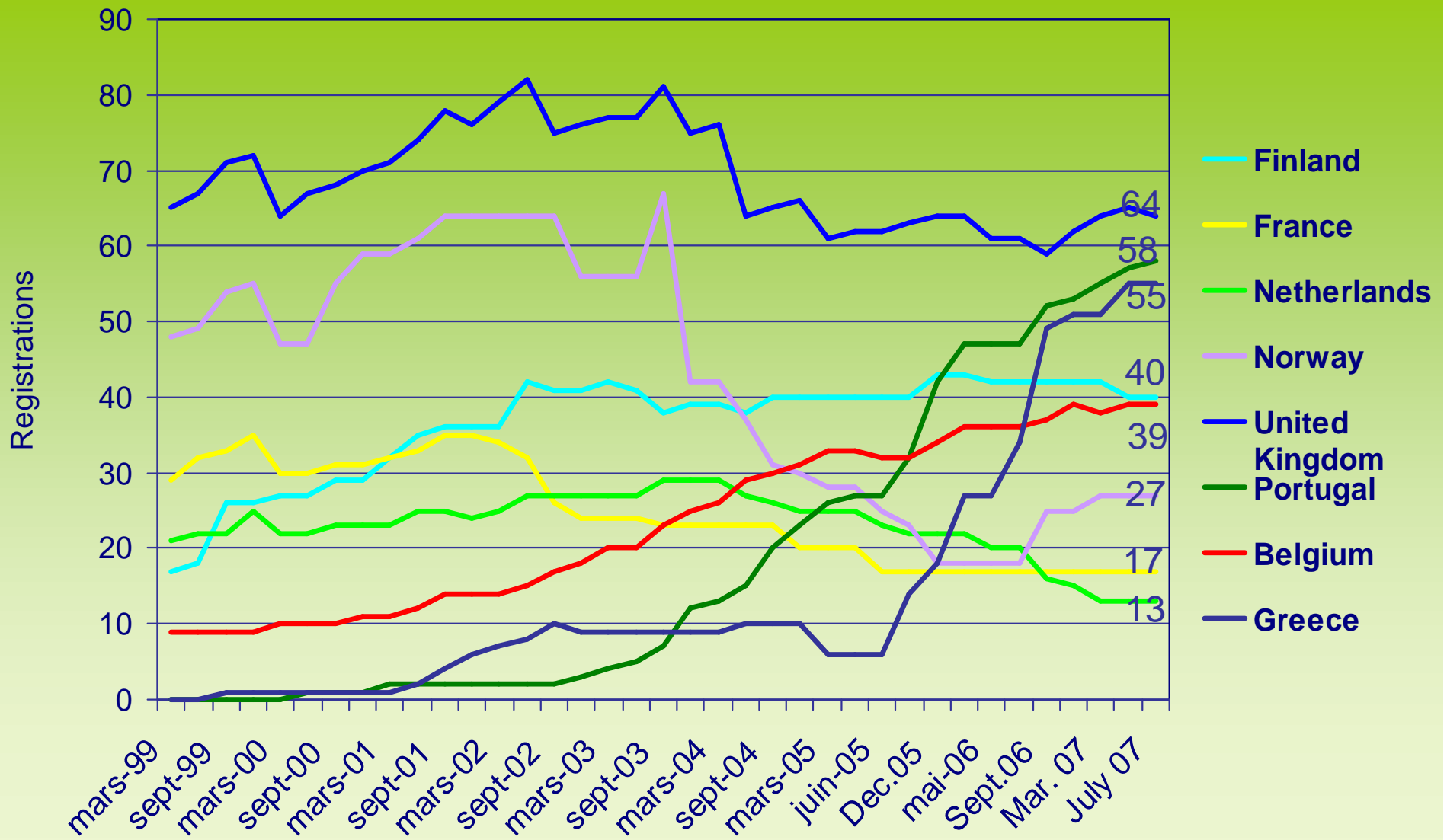
REGISTRO DE EMAS POR PAÍSES

Incremento acusado en España e Italia

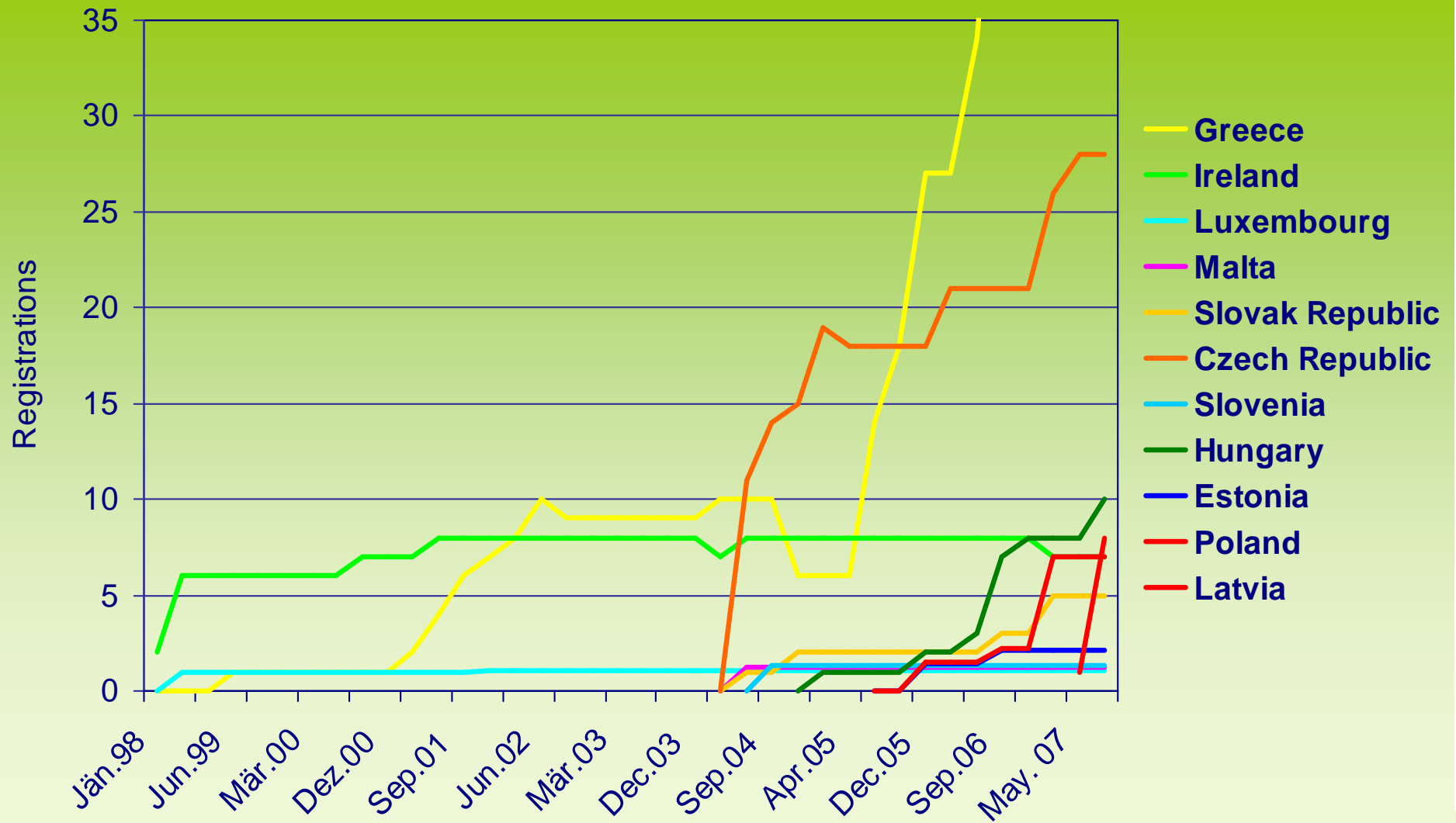


REGISTRO DE EMAS POR PAÍSES

Incremento acusado en Grecia y Portugal



REGISTRO DE EMAS POR PAÍSES



EMAS EN DIFERENTES SECTORES

Con EMAS I :

- Automóvil
- Papel - Metales - Químico - Vidrio
- Alimentación
- Reciclaje residuos – tratamiento aguas residuales

Desde EMAS II en 2002 :

- Administraciones públicas
- Hospitales
- Turismo: Hoteles - restaurantes
- Educación: escuelas - universidades

Hoy en día:

- Transporte
- Bancos – Compañías aseguradoras
- Construcción
- Consultores - ONGs
- Micro-empresas

Leading industrial sectors:

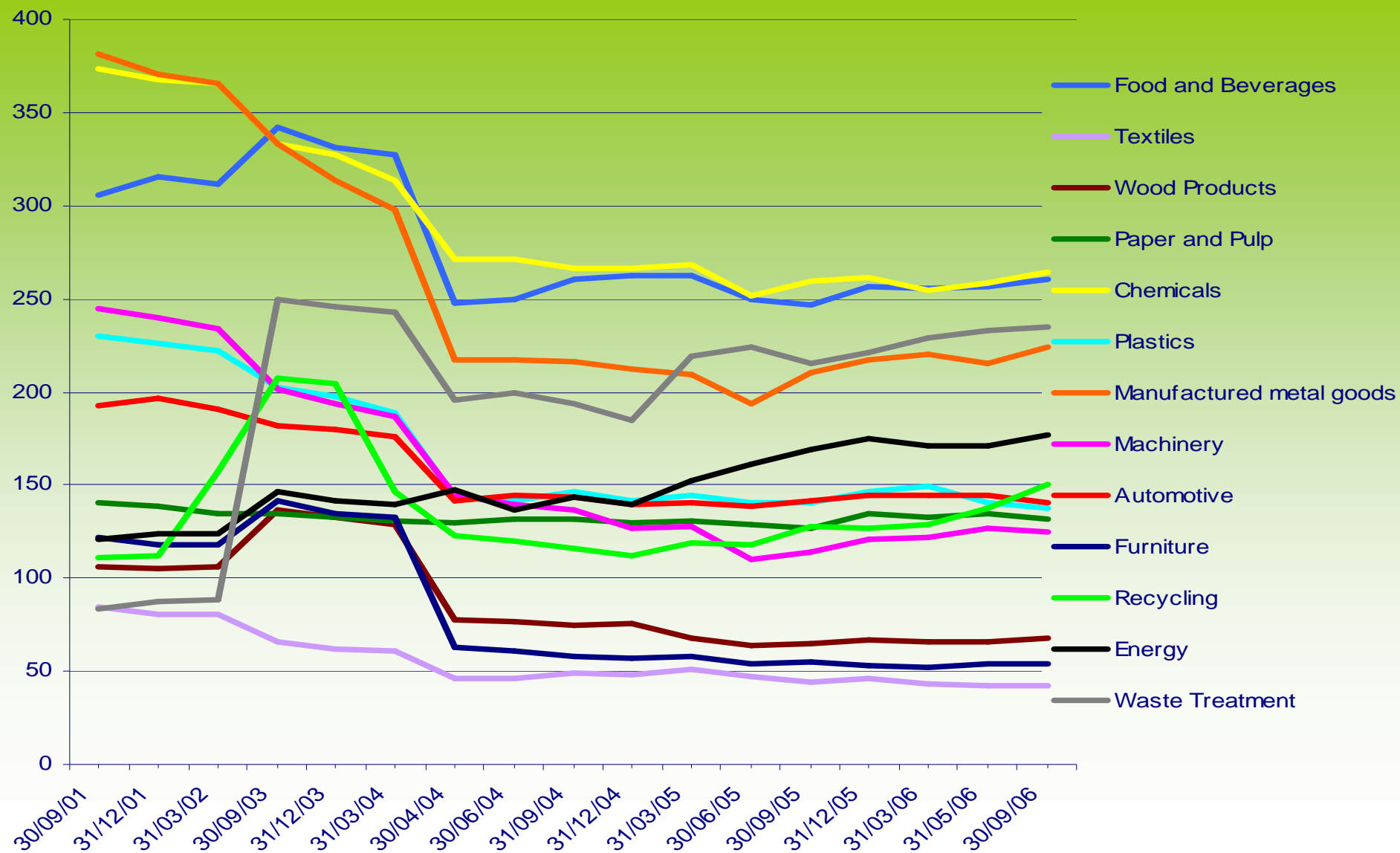
Sectors	Organisations
• Chemicals	264
• Food and beverages	263
• Sewage and refuse disposal	255
• Fabricated metal products, except machinery and equipment	232
• Electricity, gas, steam and hot water supply	191

Leading service sectors:

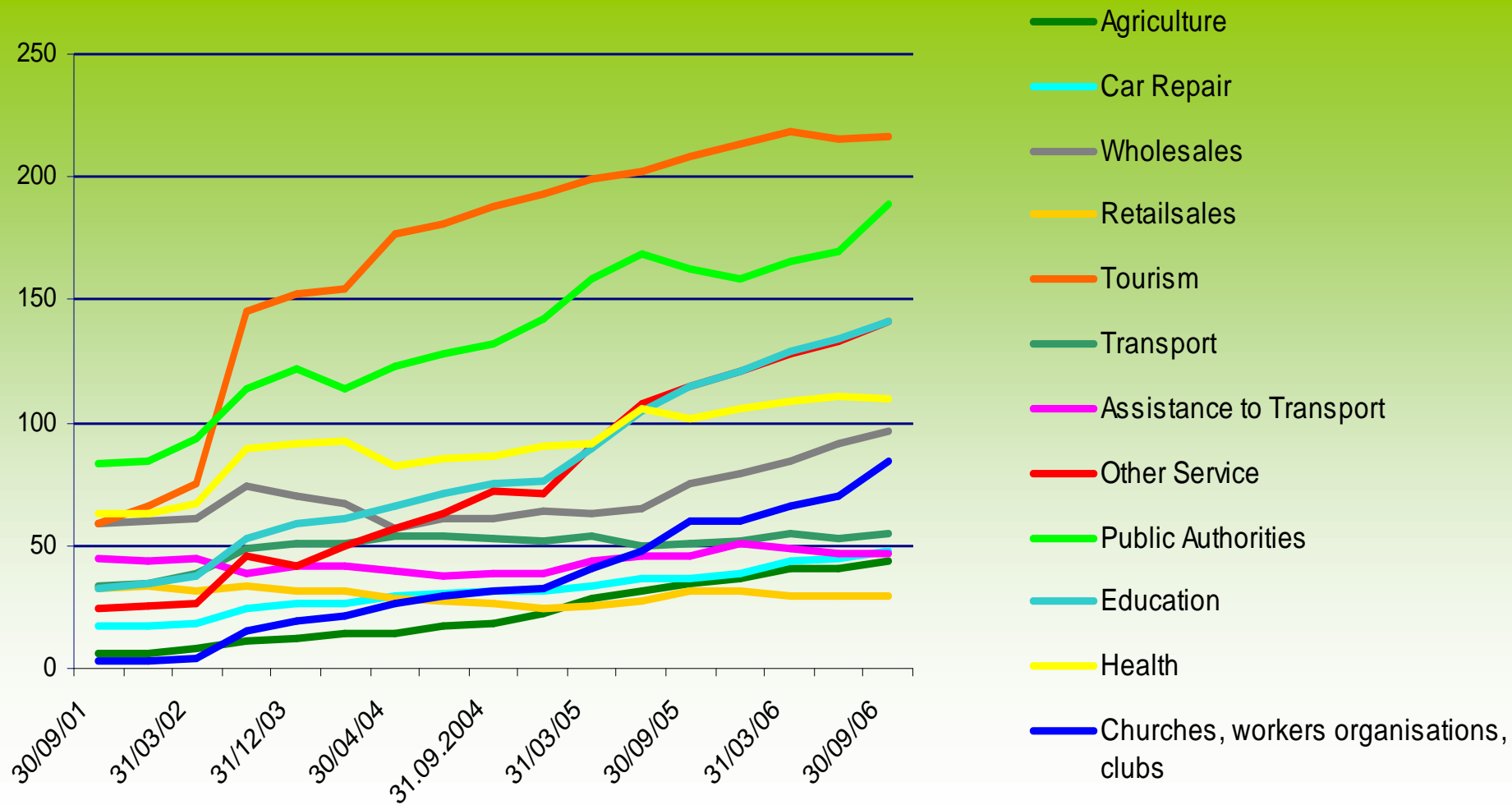
Sectors	Organisations
• Hotels and restaurants	228
• Public authorities	210
• Other business activities	171
• Education	152



TENDENCIAS EN LOS SECTORES INDUSTRIALES 2001-2006

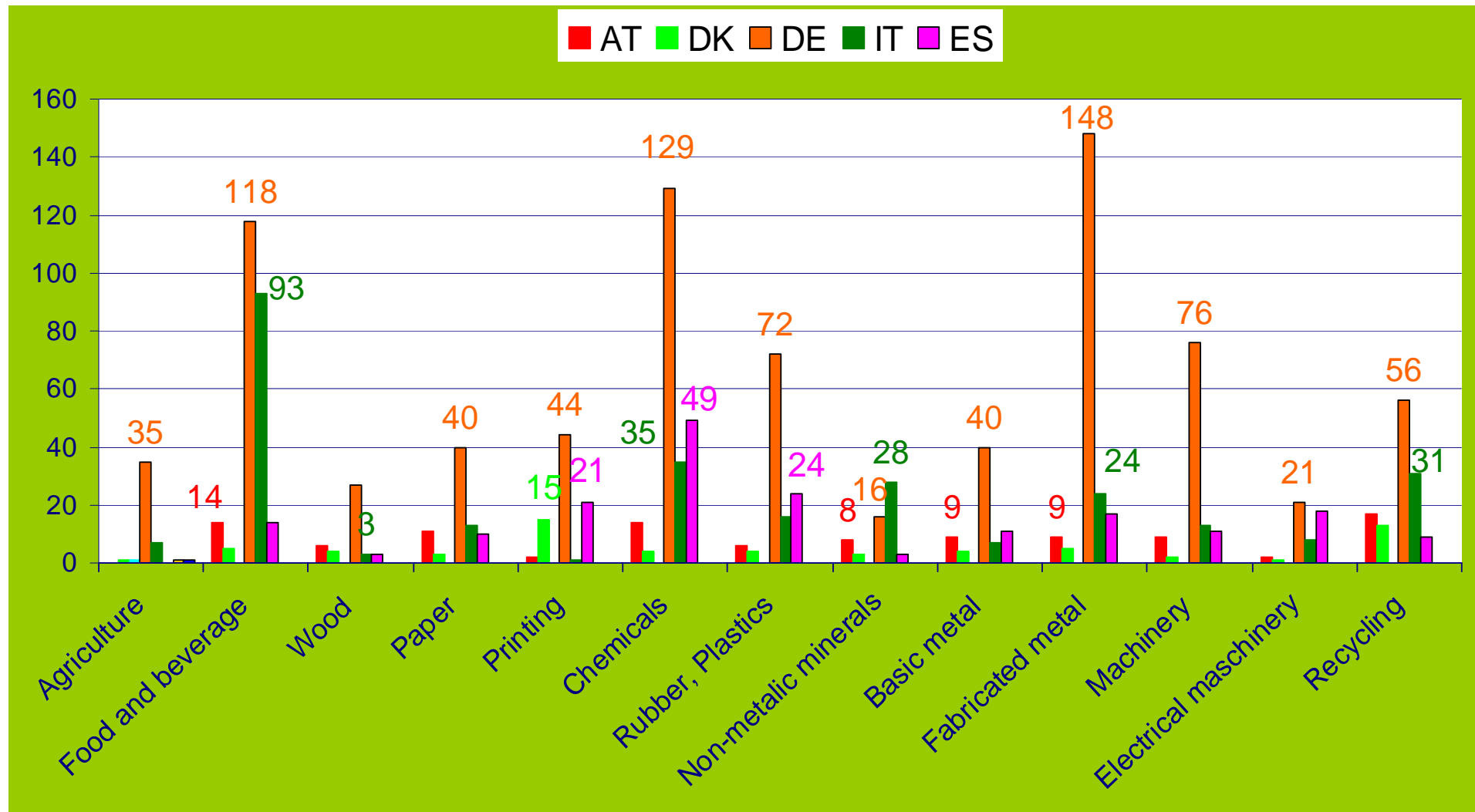


TENDENCIAS EN EL SECTOR SERVICIOS 2001 – 2006



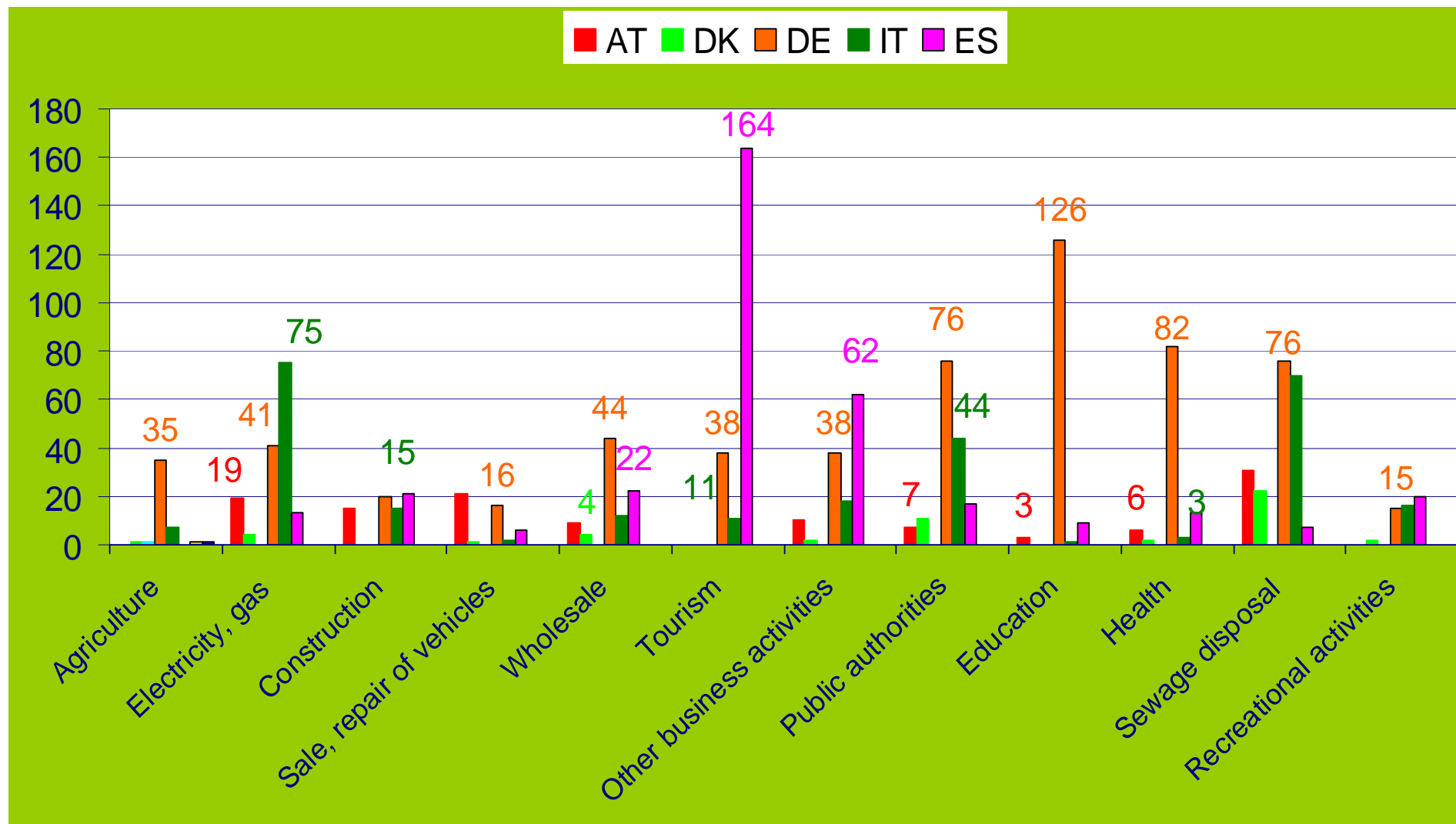
DISTRIBUCIÓN DE SECTORES POR PAÍSES

MAYO 2006



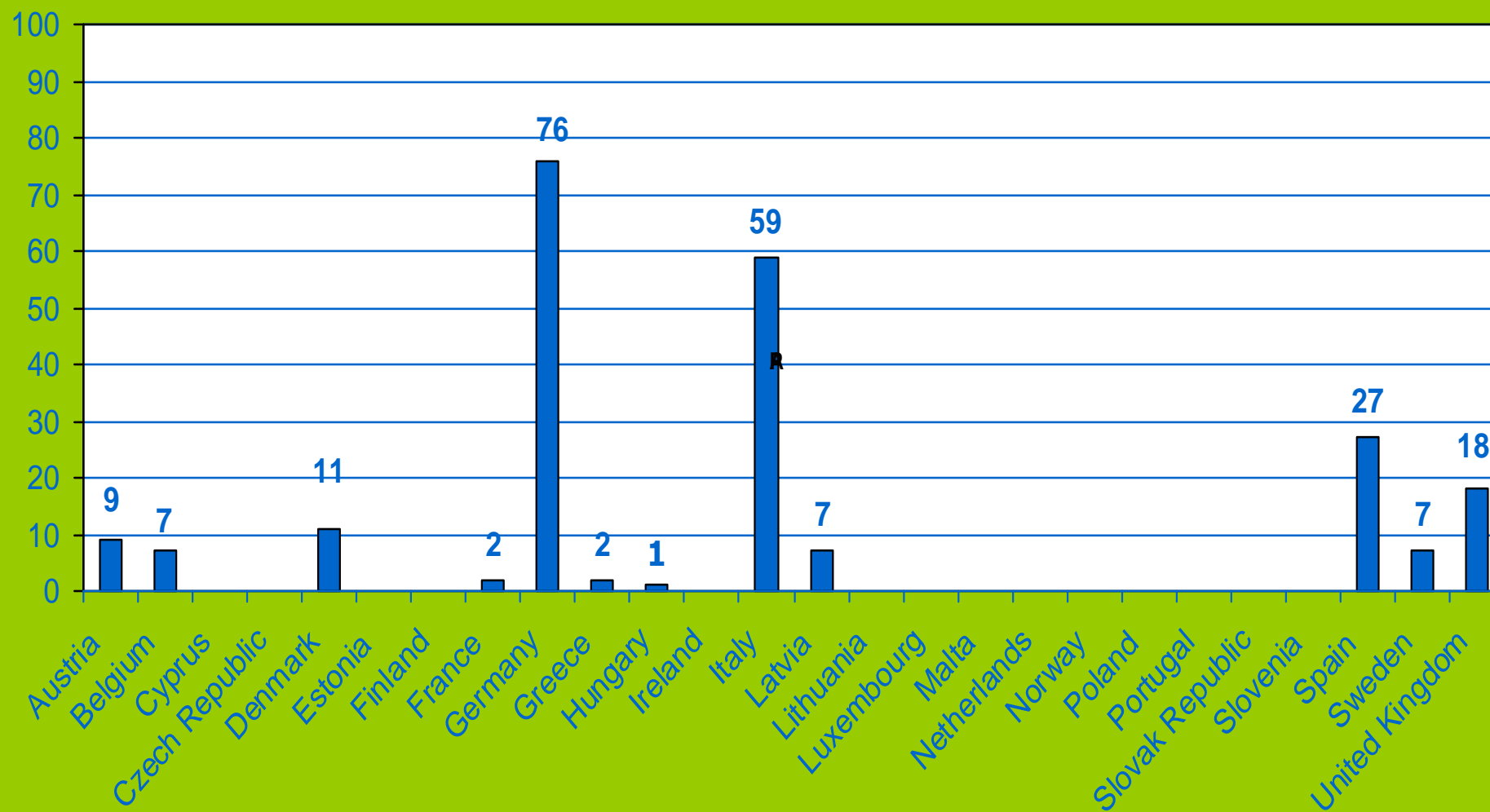
DISTRIBUCIÓN DE SECTORES POR PAÍSES

MAYO 2006



ADMINISTRACIONES POR PAISES

23/8/2007



EJEMPLOS DE EMPRESAS REGISTRADAS EN EMAS



HONDA



PLANTA DE VOLKSWAGEN EN ALEMANIA



COMPañIA AEREA CITY JET DE LUFTHANSA EN ALEMANIA



TRANVIAS EN KOLN



Página web de EMAS en la Comisión Europea

<http://ec.europa.eu/comm/environment/emas>

IMPORTANT LEGAL NOTICE: The information on this site is subject to a disclaimer and a copyright notice.

Environment English

EUROPA > European Commission > Environment > Emas Sitemap | Contact | Search on Europa

EMAS - The Eco-Management and Audit Scheme

Improving your environmental and business performance

Performance, Credibility, Transparency

What is EMAS ?

EMAS Register

How to register ?

News and Events

National, EU and Global Activities

EMAS Documents

SME Toolkit

Logo Corner

EMAS Contacts

Help / FAQ

Useful links

The Eco-Management and Audit Scheme (EMAS) is the EU voluntary scheme for organisations willing to commit themselves to evaluate, improve and report on their environmental performances. The scheme was launched in April 1995 and revised in 2001.

What's new?

Latest News (last updated January 13th 2005)

EMAS Newsletter on sports events published

Organisers of major sporting events have discovered how important it will be to manage the environmental aspects of their events. Frontrunners at the German Nürburgring and TOROC, the Organising Committee of the Winter Olympic Games 2006, in Italy's Piedmont region show what has to be done. [MORE ...](#)

The EMAS Newsletter is available to be [downloaded here](#).

Environmental Statements Library starts off with 150 statements

EMAS Helpdesk: emas@ec.europa.eu





EMAS

Gracias por su atencion

